

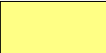



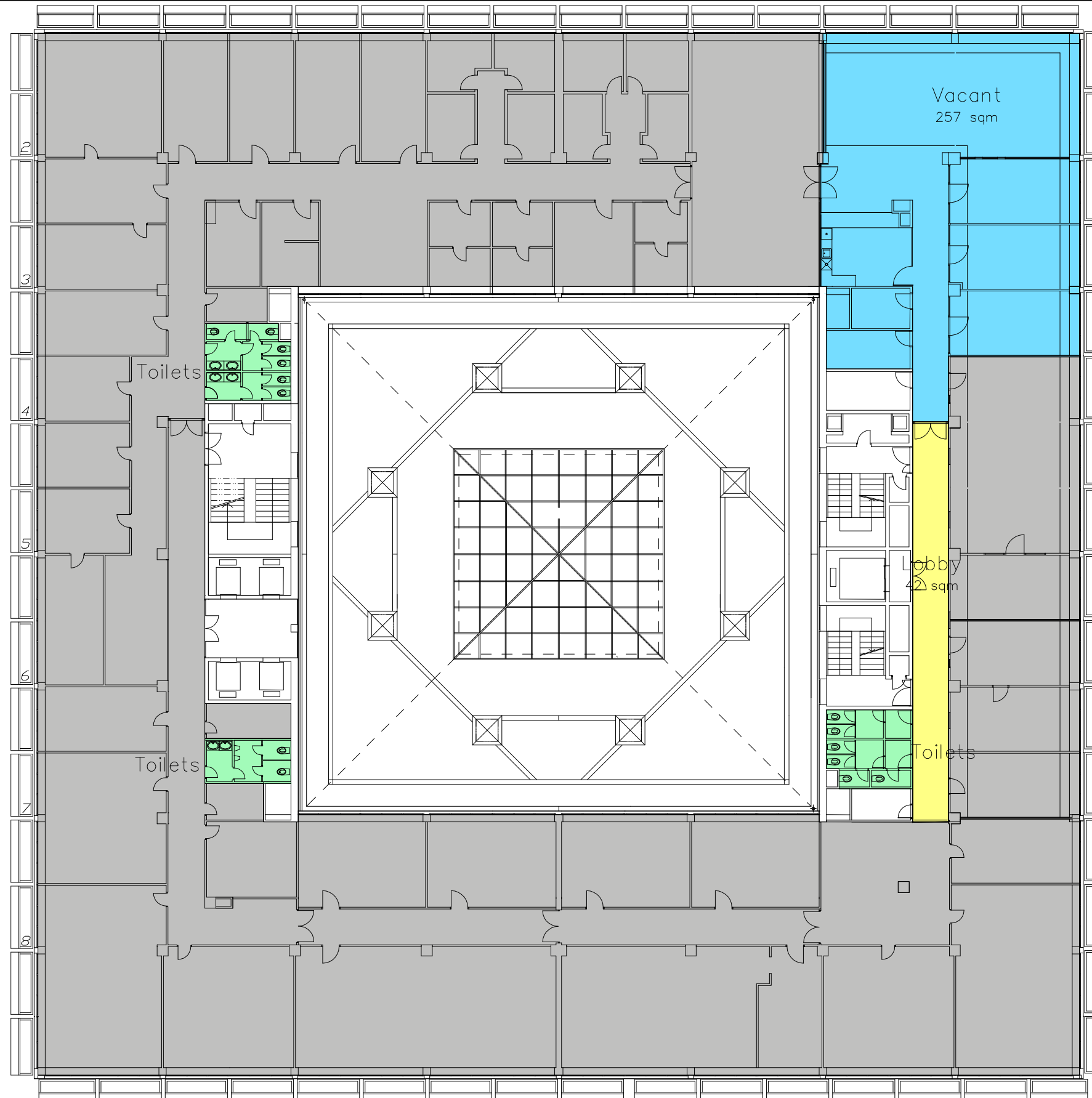
# Tenant's floorplan

CBRE s.r.o.  
Náměstí Republiky 1  
110 00 Praha 1



## Areas legend

-  VACANT  
Total area: 257 sqm
-  TOILETS
-  LOBBY
-  OCCUPIED AREA



CUBE

Evropská 178, 160 00 Praha 6 - Vokovice

5<sup>th</sup> floor

Date:

1/12/2017